

PlayStation VITA (PS VITA)

Controls & Settings guide

The PS Vita Parental Controls can make the handheld console safer for your children by restricting games or videos with mature content, disabling the internet browser and blocking adult sites, and restricting how your child can chat on the PlayStation Network.

What do I need?

The PlayStation VITA console you wish to apply restrictions to.

Restrictions you can apply



Browser Access



Chatting



Game Ratings



Inappropriate content



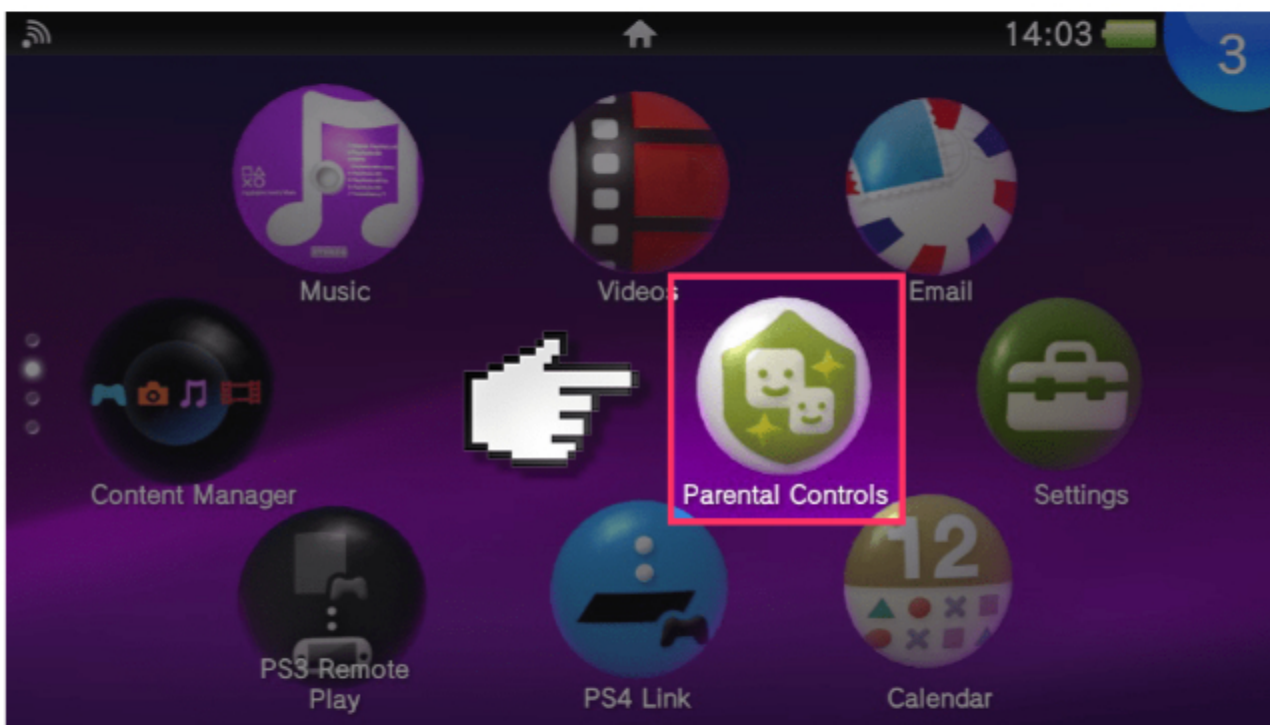
Privacy and identity theft



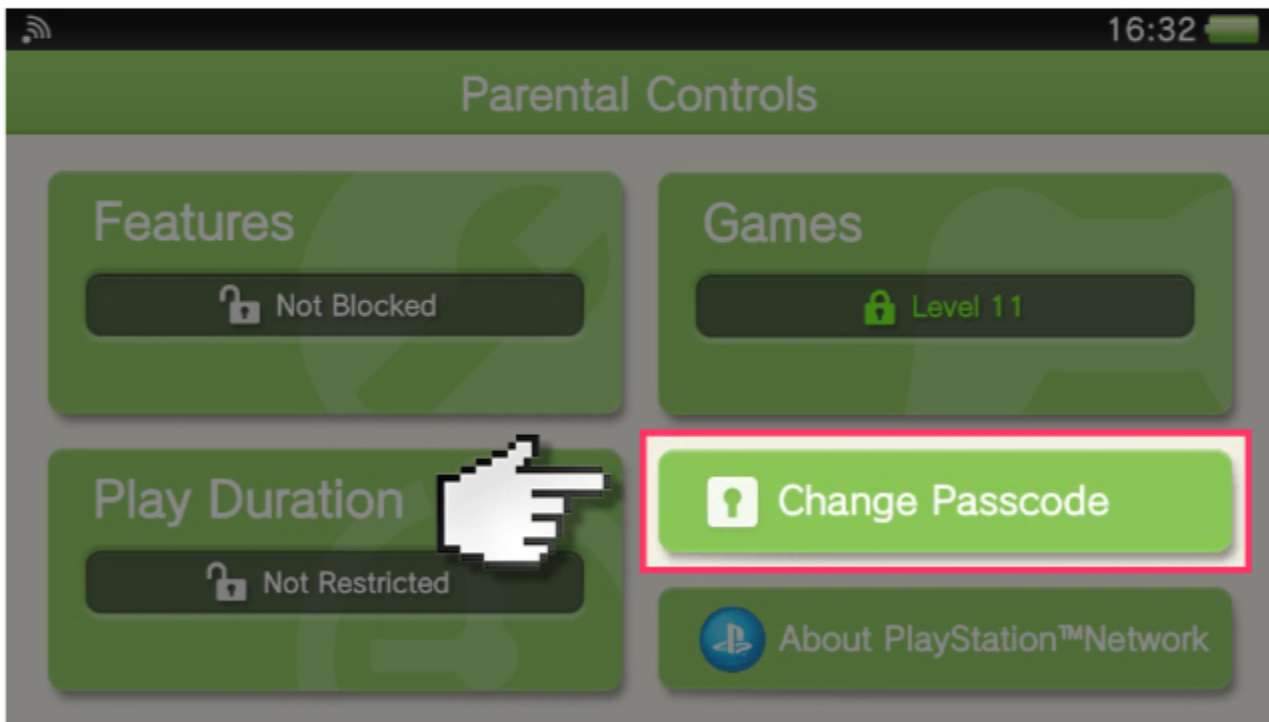
Purchasing

Step by Step instructions

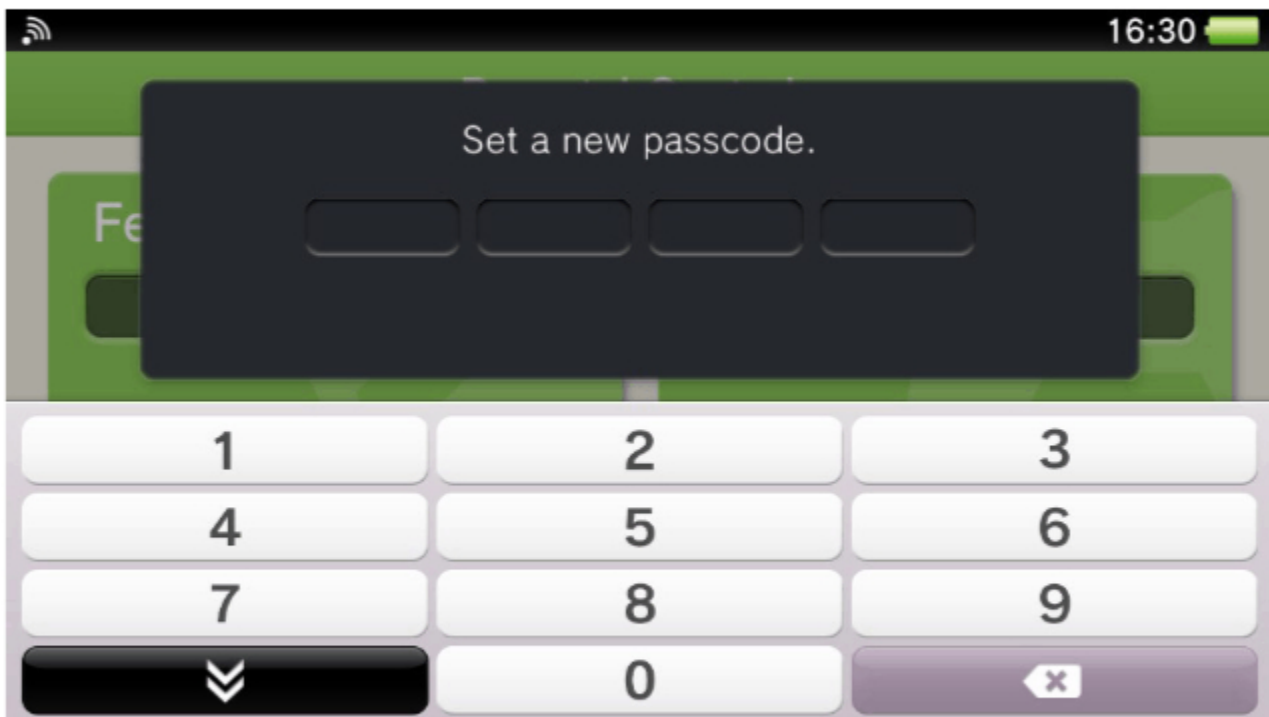
1. Open the “Parental Controls” application from the home screen. If you are prompted for a 4 digit PIN number the default is “0000”.



2. Tap on "Change Passcode".



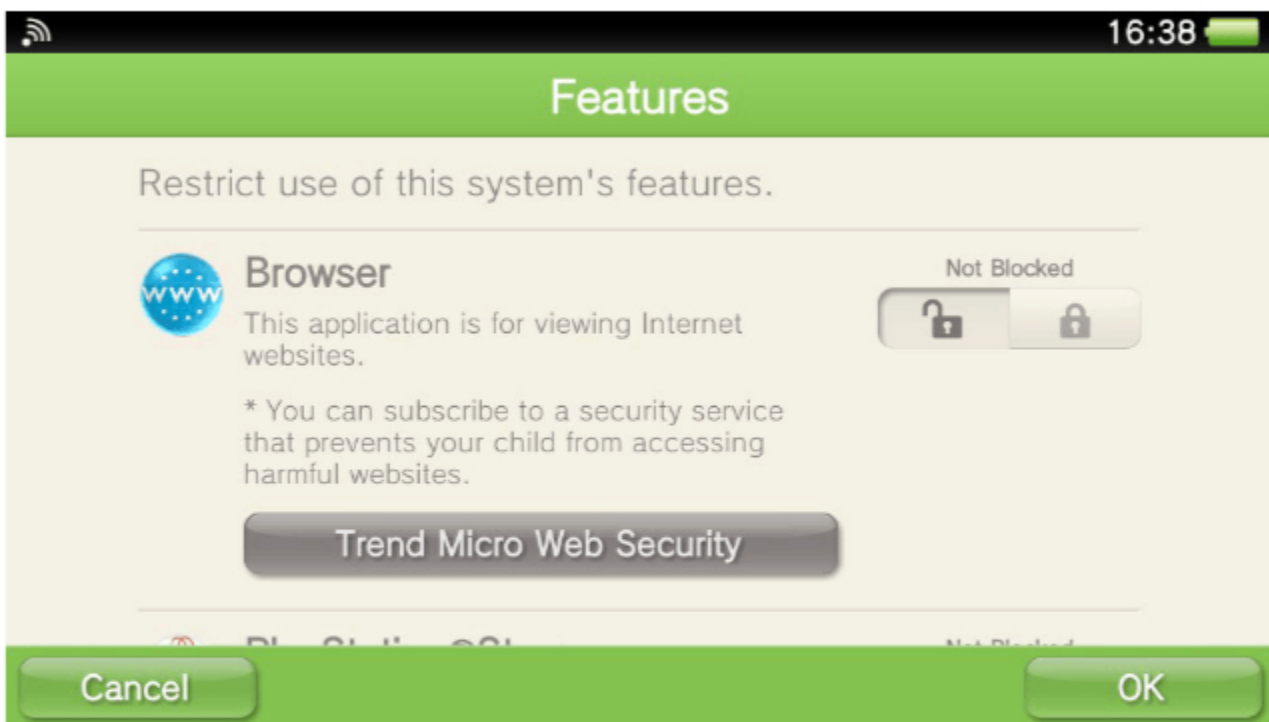
3. Set a 4 digit passcode and re-enter to confirm. This passcode will be used to access the Parental Controls in the future and will also be requested when trying to open restricted content.



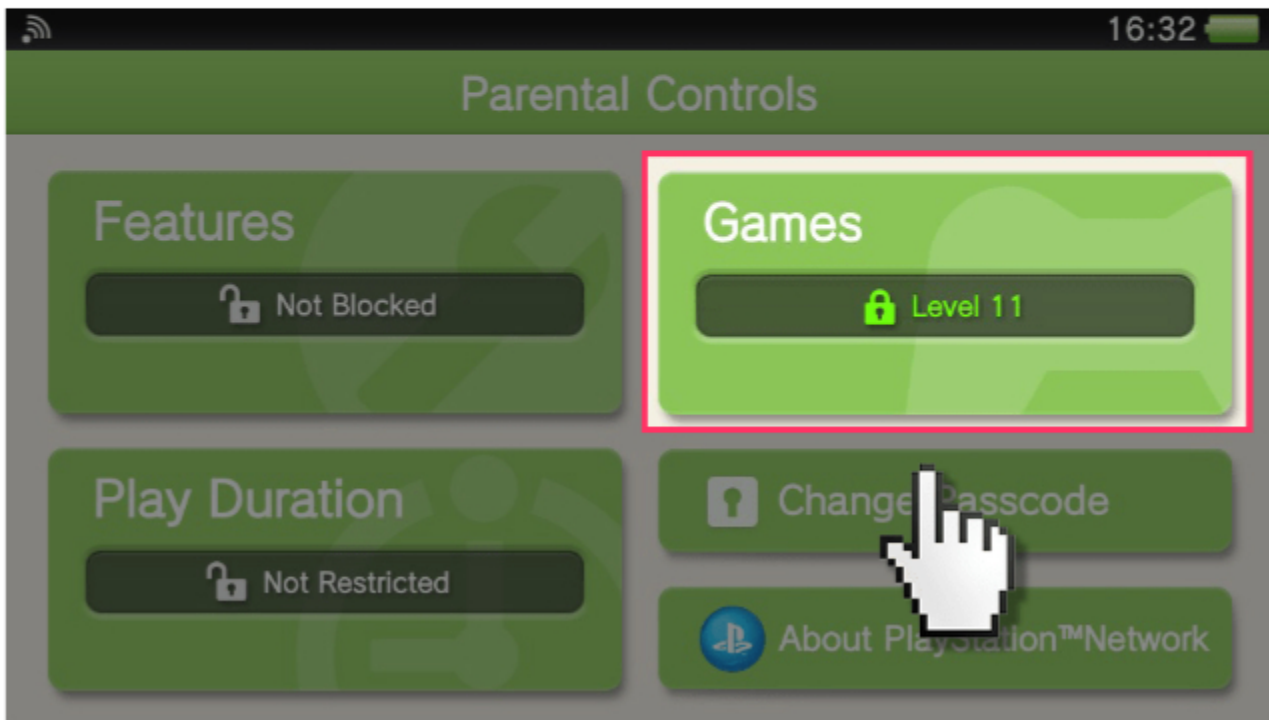
4. Tap "Features".



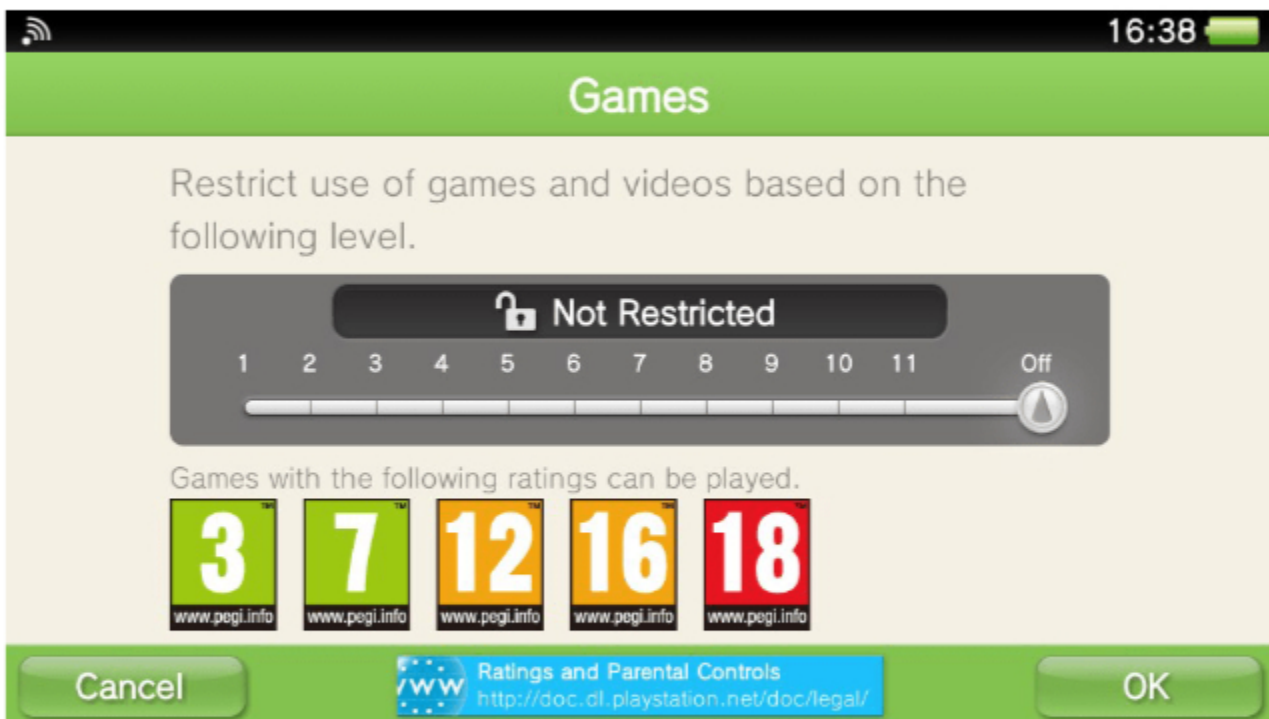
5. On the "Features" page you can block the use of the Internet Browser, the PlayStation Store, Email use, and Location Data. Tap "OK" to exit.



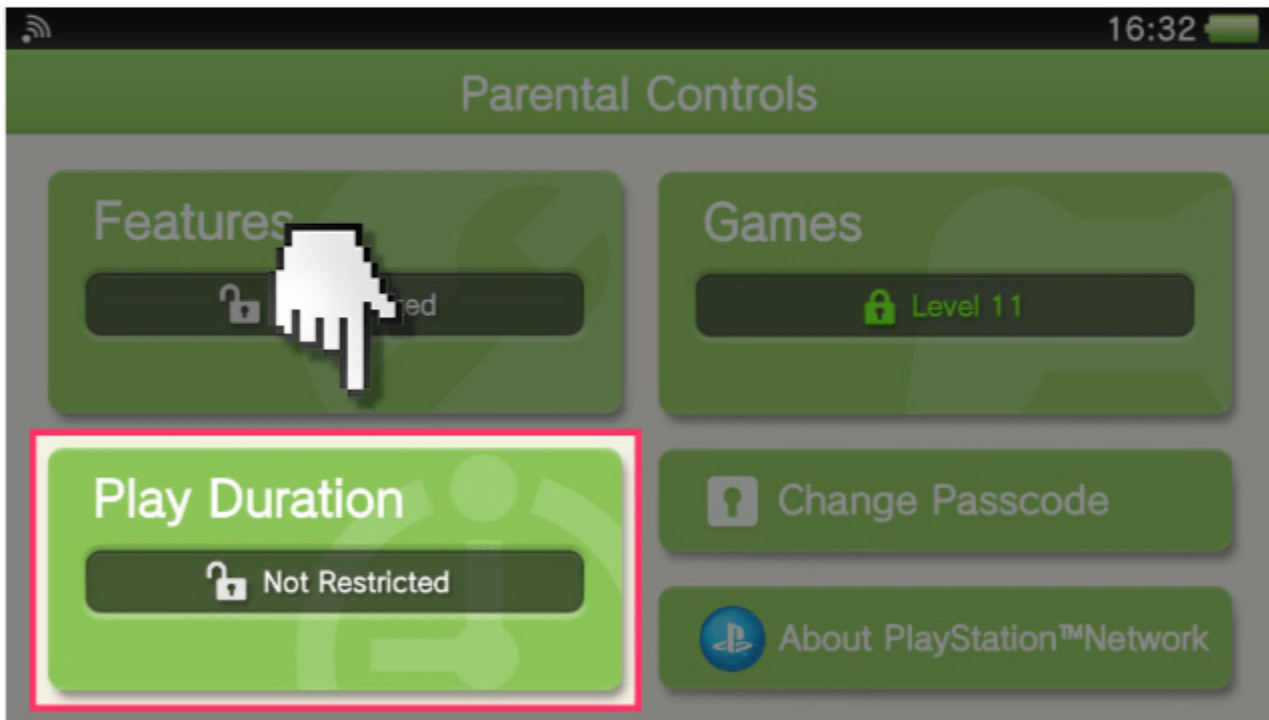
6. Tap "Games".



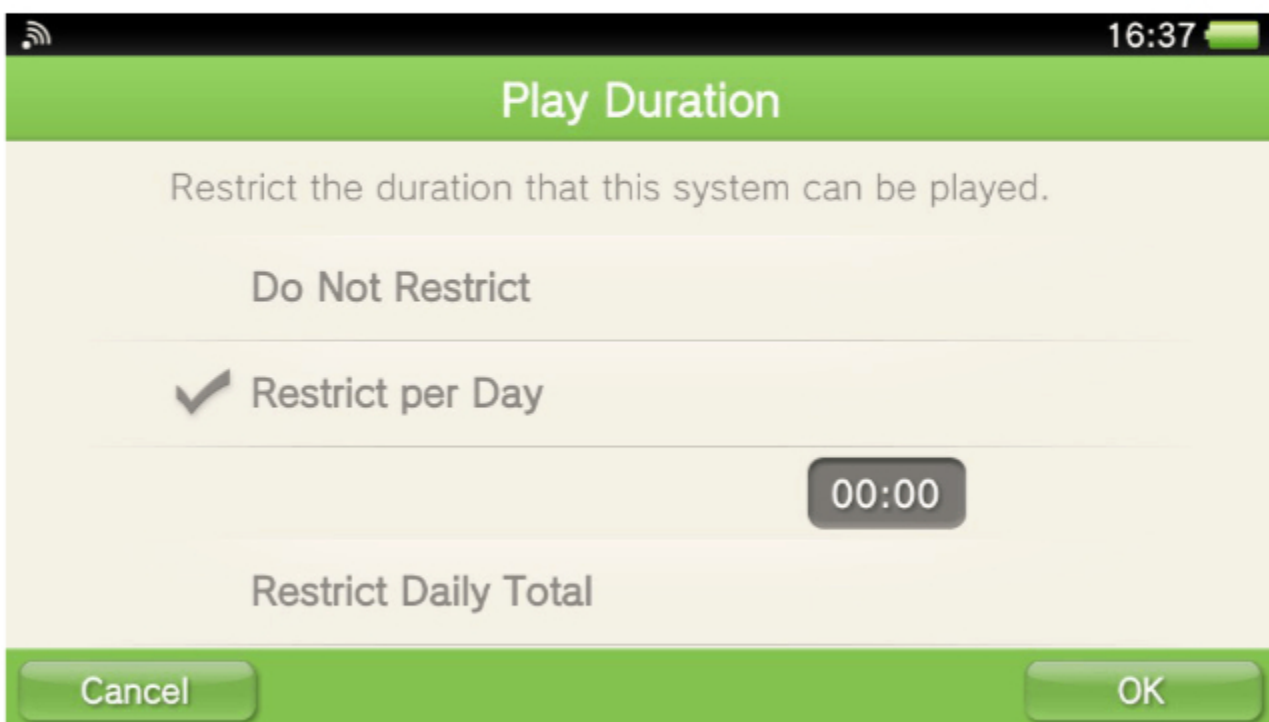
7. On the "Games" page you are able to set the maximum PEGI age rating of games that can be run on the system. Tap "OK" to exit.



8. Tap "Play Duration".



9. On the "Play Duration" page you can set the time that the system can be used either as a daily maximum or set a maximum for each day of the week. Tap "OK" to exit.



10. You will also see a link called “About PlayStation Network”.

Setting up Parental Controls for the PlayStation Network can be found in a separate guide. Press the blue PlayStation button on the bottom-left front of the console to exit the Parental Controls section.